

使用手册/Manual

Class-A Headphone Amplifier

B1s

aune

aune

B1s

全分立甲类便携Hi-Fi耳机放大器

使用手册/Manual

前言

亲爱的用户：

感谢您购买B1s便携耳机放大器，并恭喜您慧眼独具选择了这台独特的Hi-Fi便携耳机放大器。

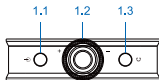
衷心期望这台崭新的B1s，能带给您许多高保真音乐的体验和乐趣。

我们建议您先阅读本手册，以便正确使用此台Hi-Fi便携耳机放大器的所有功能。

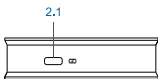
介绍

B1s为一款全分立甲类便携耳机放大器，便携播放器和手机通过音频线路输出口与B1s进行连接，B1s对音频信号进行放大以驱动更广范围的耳机，B1s具备甲类柔美音色和提供更强驱动特性，是一款高品质的便携耳机放大器！

面板按键 及接口名称



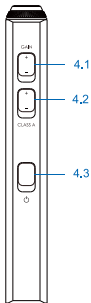
顶视图



底视图



左视图



右视图

各部名称及功能说明

顶视图

1.1 线路输入口

1.2 音量控制旋钮

1.3 耳机输出口

底视图

2.1 USB充电口

(充电电压5V, 充电电流1A以上)

左视图

3.1 电量检测按键 ①

3.2 电量检测及充电指示灯 ②

特别提示:

① 需要检测剩余电量时请触动一下检测按键

② 按动电量检测按钮后此指示灯会闪烁

○○○○● 闪烁一次表示剩余电量10%

○○○○●● 闪烁二次表示剩余电量20%

○○○○●●● 闪烁三次表示剩余电量60%

○○○○●●●● 闪烁四次表示剩余电量80%

●●●●● 闪烁五次表示剩余电量100%

充电状态指示灯闪烁, 充电完成指示灯常亮

右视图

4.1 增益调整 ③

4.2 电流调整 ④

4.3 电源开关 ⑤

特别提示:

③ 将增益调整到“-”时为低增益

将增益调整到“+”时为高增益

④ 此键在B1工作状态时, **禁止拨动**

将电流调整到“-”时为静态电流20mA

将电流调整到“+”时为静态电流40mA

⑤ 向上拨动为“开机”, 向下拨动为“关机”

参数

Frequency response (from 10Hz to 20kHz): $\pm 0.02\text{dB}$

THD+n: 0.00015% @300 Ω

SNR: 128dB @300 Ω

Crosstalk: -96dB @300 Ω

Headphone output power:

@300 Ω 88mW

@600 Ω 44mW

@32 Ω 80mW

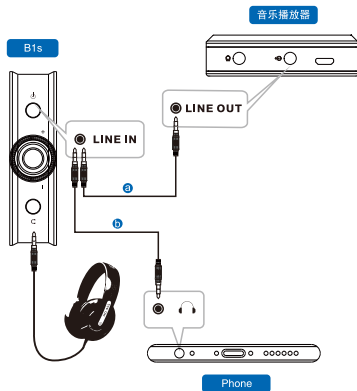
Class-A 25mW/16 Ω 50mW/32 Ω

Size: 125x65x18 (mm)

Weight: 230 (g)

操作说明

与便携播放器或者具备LINE OUT设备的连接



特别提示:

- ❶ B1与音乐播放器连接示意图
- ❷ B1与iPhone/Android手机连接示意图



官方公众平台

OFFICIAL PUBLIC PLATFORM



微信公众号
aune



新浪微博
auneaudio



百度贴吧
aune



产品交流QQ群
561406760

武汉奥莱尔科技发展有限公司
WUHAN AO LAI ER TECHNOLOGY CO.LTD.

地址：湖北省武汉市硚口区古田5路17号新材料孵化基地新1号楼201
电话：027-85420526 网址：www.auneaudio.com 邮箱：zhangli@auneaudio.com

欢迎加入Aune产品交流QQ群：561406760

PREFACE

Dear Customers;

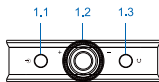
Thank you very much for purchasing aune B1s Headphone AMP and congratulate on making a wise choice to choose this unique individual component-made portable headphone amplifier. We hope the brand new B1s could bring you a lot of Hi-Fi music experiences and joys.

Please read this manual carefully to ensure you know how to properly operate this device before use.

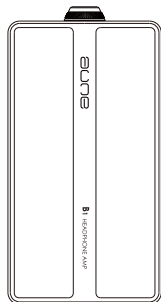
INTRODUCTION

aune B1s is an individual component-made class-A portable headphone amplifier. Through audio line output, portable player and cell phone are connected with B1s. Then B1s amplifies audio signal to drive various headphone. B1s has soft and sweet music quality of class-A and outstanding characteristics of driving various headphone amplifier.

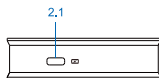
VIEW OF PANEL AND NAME OF EACH PART



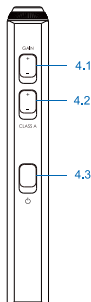
Top View



Left View



Bottom View



Right View

NAME OF PARTS AND INTRODUCTION OF FUNCTIONS

Top View

- 1.1 Input of line
- 1.2 Volume control knob
- 1.3 Output of headphone

Bottom View

- 2.1 USB charging port
(Charging voltage is 5V and charging current is above 1A)

Left View

- 3.1 Button for detecting remaining power^①
- 3.2 Detection of remaining power and charging indicator^②

SPECIAL NOTE:

- ① If remaining power being detected, pls press detection button.
 - ② Indicator would flash after pressing detection button.
 - 10% power is remained if flashing once.
 - 20% power is remained if flashing twice.
 - 60% power is remained if flashing three times.
 - 80% power is remained if flashing four times.
 - 100% power is remained if flashing five times.
- Charging status indicator flashes, indicator light is on when char in com leted.

Right View

- 4.1 Gain adjustment^③
- 4.2 Current adjustment^④
- 4.3 Power button^⑤

SPECIAL NOTE:

- ③ When gain is adjusted to "-", it is low gain.
When gain is adjusted to "+", it is high gain.
- ④ **Never flip** this button under B1 is working.
When current is adjusted to "-", its static current is 20mA;
when current is adjusted to "+", its static current is 40mA.
- ⑤ Flip down to turn on B1 and flip up to turn off it.

SPECIFICATIONS

Frequency response (from 10Hz to 20kHz): $\pm 0.02\text{dB}$

THD +n: 0.00015% @300 Ω

SNR: 128dB @300 Ω

Crosstalk: -96dB @300 Ω

Headphone output power:

@300 Ω 88mW

@600 Ω 44mW

@32 Ω 80mW

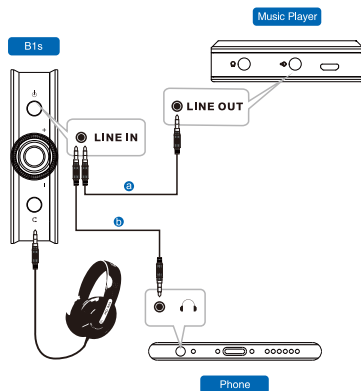
Class-A 25mW/16R 50mW/32R

Size: 125x65x18 (mm)

Weight: 230 (g)

PLAYING SCREEN DISPLAY INSTRUCTIONS

Connecting with portable player
or LINE OUT device



SPECIAL NOTE:

- ① Illustration of B1 connecting with music player
- ② Illustration of B1 connecting with iPhone/Android cellphone



官方公众平台

OFFICIAL PUBLIC PLATFORM



auneaudio



auneaudio



www.auneaudio.com



aune

武汉奥莱尔科技发展有限公司

WUHAN AO LAI ER TECHNOLOGY CO.LTD.

Address: Number 17, Gutian 5rd. Qiaokou district, Wuhan, 430000, China

Tel: +86-27-59251012 Web: www.auneaudio.com Email: sales@auneaudio.com