

aune

Yuki

USB DAC with Headphone Amp

User Manual

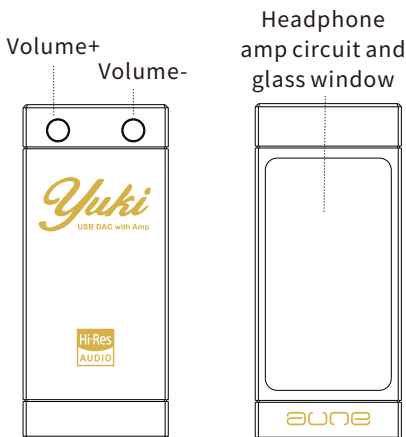
Preface

Dear Customer,

Thanks for purchasing the Yuki and congratulations on choosing this high-quality portable DAC with headphone amp. We sincerely hope the brand new Yuki will bring you excellent Hi-Fi experience.

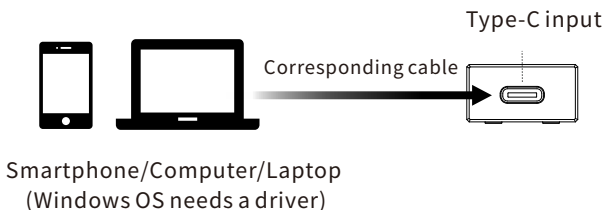
Please read this manual carefully before using the device.

Yuki at a Glance



Press and hold VOLUME+ and VOLUME- for 2 seconds to change gain level.

Single-ended 3.5mm headphone jack



Introduction

Yuki, equipped with dual CS43198 DAC chip, has the innovative dual-layer structure that separates the digital circuit and the analog headphone amp circuit. The 4-way balanced headphone amp circuit has 4×4 transistors to drive the output. It is a unique "dongle" that purely focuses on sound.

Specifications

USB Input:

Max bit depth: 32bit

Max sampling rate: 768k

Max DSD rate (native): DSD256

Single-Ended 3.5mm Output:

Output level: 2.0Vrms

Noise floor: 2.6uV

THD+N: 0.00036%

Output power: 90mW@30Ω

Balanced 4.4mm Output:

Output level: 4.0Vrms

Noise floor: 2.9uV

THD+N: 0.00033%

Output power: 160mW@30Ω

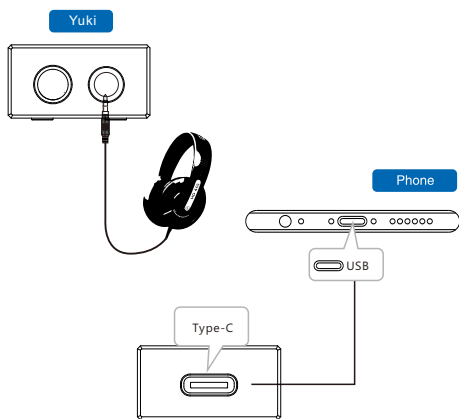
Dimensions: 53.5*24*13mm

Accessories: Type-C to Type-C cable

Operations

To Connect with a Smartphone or a Portable Device with USB Output

1. Connect the Yuki and a smartphone/Pad/DAP via USB.
2. Plug a pair of headphones into the Yuki's corresponding output (4.4mm/3.5mm).
3. Play music on the connected smartphone/Pad/DAP (for some models, you may need to enable OTG manually).



* Connections with different devices need different cables. If you need help, please contact your dealer or sales@auneaudio.com

* Do not plug in two pairs of headphones.

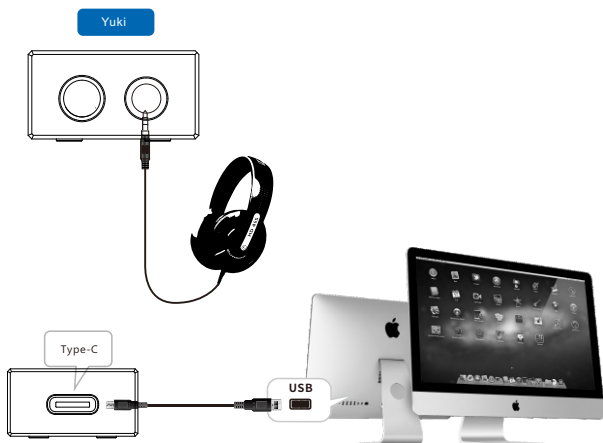
Operations

To Connect with a Computer/Laptop

* For Windows OS, a driver is needed. Please go to:
www.auneaudio.com → English → Service & Support →
Downloads → Yuki and download the driver.

Apple's macOS doesn't need a driver.

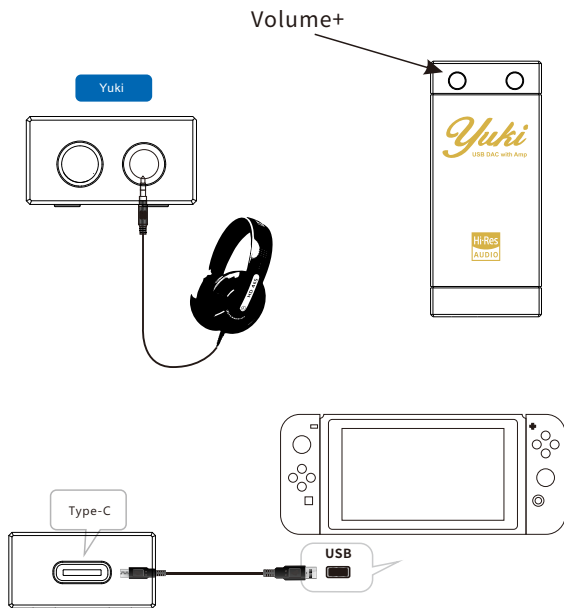
1. Connect the Yuki and a computer/laptop via USB.
2. Plug a pair of headphones into the Yuki's corresponding output (4.4mm/3.5mm).
3. Play music on the connected computer/laptop (for some music player software, you may need to set the output device; for foobar2000 settings to play DSD, please refer to the guide to driver installation and settings)



Operations

To Connect with a UAC1.0 device (such as Switch)

By default, the Yuki works in UAC2.0 mode. For a UAC1.0 device (such as Switch), please hold down VOLUME+ of the Yuki and don't let go until the two devices are connected by cable and the Yuki is powered on. Then it'll work in UAC1.0 mode.



aune

aune | 430034 WUHAN | CHINA

Email: sales@auneaudio.com | Fax: +86-27-85840435 | www.auneaudio.com