

aune

# Yuki SE

USB DAC with Headphone Amp

User Manual

# Preface

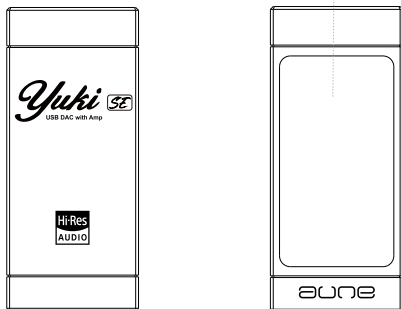
Dear Customer,

Thanks for purchasing the Yuki SE, and congratulations on choosing this high-quality portable DAC with headphone amp. We sincerely hope the Yuki SE will bring you excellent Hi-Fi experience.

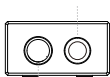
Please read this manual carefully before using the device.

# Yuki SE at a Glance

Discrete headphone amp  
circuit and glass window



Single-ended 3.5mm headphone jack



Balanced 4.4mm headphone jack



Smartphone/Pad/Computer/Laptop

# Introduction

Yuki SE, equipped with ES9280 DAC chip, has the innovative double-layer structure that separates the digital circuit from the analog headphone amp circuit. The 4-way balanced headphone amp circuit has  $4 \times 4$  transistors to drive the output. It is a high-quality portable DAC with headphone amp that purely focuses on sound.

## Specifications

### USB Input

Max bit depth: 32bit

Max sampling rate: 768k

Max DSD rate (native): DSD512

### 3.5mm Output

Output level: 2.0Vrms

Noise floor: 3.6uV

THD+N: 0.00054%

Output power: 90mW@30Ω

### 4.4mm Output

Output level: 4.0Vrms

Noise floor: 2.9uV

THD+N: 0.00060%

Output power: 160mW@30Ω

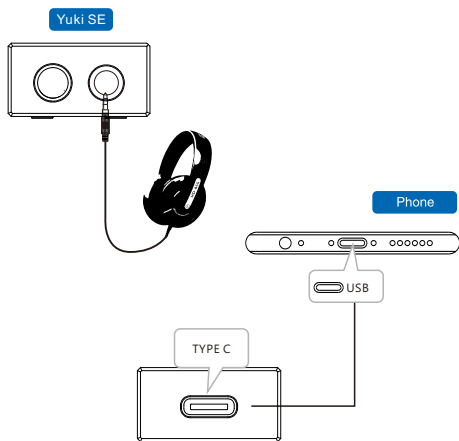
Dimensions: 53.5\*24\*13mm

Accessories: USB-C to USB-C cable,  
USB-A to USB-C adapter

# Operations

## To Connect with a Smartphone or a Portable Device with USB Output

1. Connect the Yuki SE and a smartphone/Pad/DAP via USB.
2. Plug a pair of headphones into the Yuki SE's output (4.4mm/3.5mm).
3. Play music on the connected smartphone/Pad/DAP (for some models, you may need to enable OTG manually).



\* Connections with different devices need different cables.

If you need help, please contact your dealer or [sales@auneaudio.com](mailto:sales@auneaudio.com)

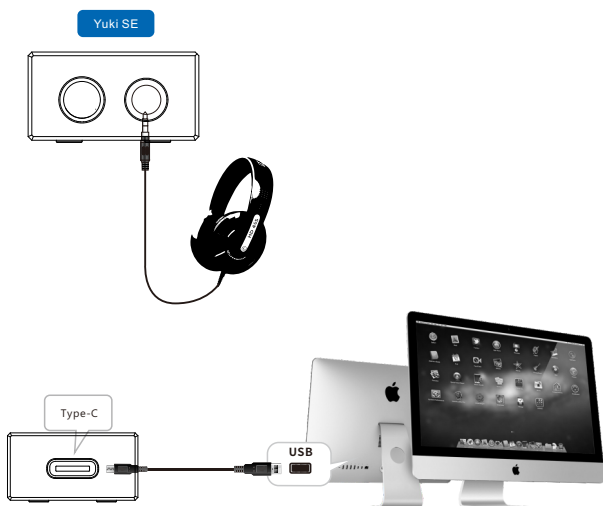
\* Do not plug in two pairs of headphones.

# Operations

## To Connect with a Computer/Laptop

The Yuki SE is widely compatible with computers running Windows 10 or above, various Android phones, iPhones, and Macs.

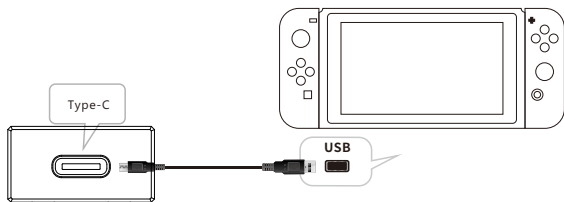
1. Connect the Yuki SE and a computer/laptop via USB.
2. Plug a pair of headphones into the Yuki SE's output (4.4mm/3.5mm).
3. Play music on the connected computer/laptop.



# Operations

## To Connect with a UAC 1.0 Device (such as Switch)

The Yuki SE is compatible with UAC1.0 devices. Simply connect the device to the Yuki SE using a dedicated cable.



aune

aune | 430034 WUHAN | CHINA

Email: [sales@auneaudio.com](mailto:sales@auneaudio.com) | Fax: +86-27-85840435 | [www.auneaudio.com](http://www.auneaudio.com)